



# OLOID

iPAD Installation Guide

Oloid Verify/Connect

Ver1.0

**Last Updated: May 3, 2023**

*Disclaimer*

*The information furnished herein by Oloid is proprietary and confidential. It is intended for Oloid customers and for Oloid internal use. It should not be disclosed, duplicated, or published in whole or in part without the prior written permission of Oloid.*

## Oloid Connect/Verify: iPad Installation

It is recommended to wall mount the iPad and also use an iPad Case/Cover.

Mount the iPad keeping the following in mind.

- **Mount Height:** Ensure that the iPad is at an appropriate height for users (about 4.5 feet or 137 cm from the ground) and a comfortable distance for facial recognition (about 1.5 - 2.5 feet or 45 - 75 cm).
- **Power Source:** The iPad must be mounted such that it can always be plugged to a power source.
- **Lighting:** Ensure proper lighting so that well-lit images may be captured.
- **Sturdy Mount:** The iPad must be mounted on a sturdy platform so that steady images are captured.

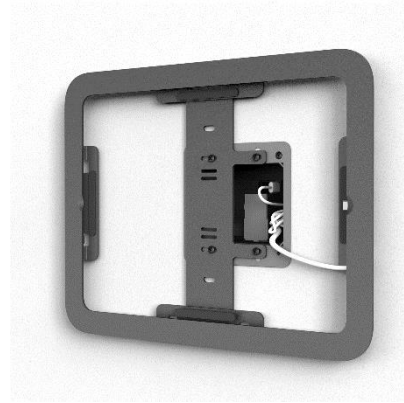
## iPAD Wall Mount Installation

Before you begin, please ensure you have the following items ready:

- Apple iPad Pro 11”  
(compatible with Oloid  
Connect)



- Powered iPad wall mount (compatible with your iPad model)



- Mounting hardware (included with the wall mount)

- Power drill (if necessary)



- Phillips Screwdriver



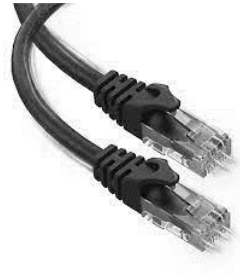
- Level



- Measuring tape



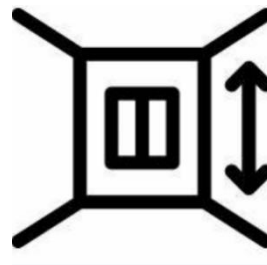
- Optional: Ethernet cable (if using Power over Ethernet)



## Installation Process

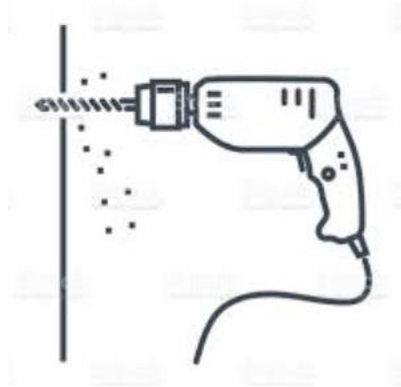
### Step 1: Choose the Mounting Location

1. Select a suitable location for mounting the iPad. Consider factors such as visibility, accessibility, and security. Use the recommended mounting height and angle for optimal facial recognition performance.
2. Use a measuring tape and a level to ensure accurate placement of the mount. Mark the mounting holes with a pencil or a marker.



### Step 2: Install the Wall Mount

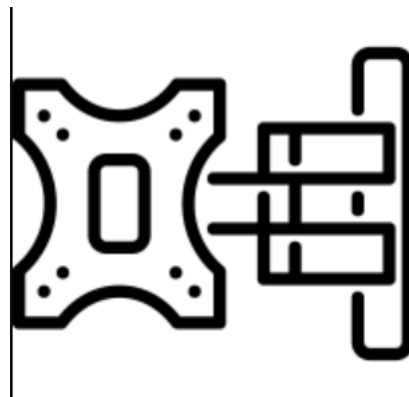
1. If necessary, use a power drill to drill pilot holes at the marked mounting holes to aid in installation.



2. Attach the wall mount to the wall using the provided mounting hardware, such as screws or brackets. Make sure the mount is securely fastened and level.

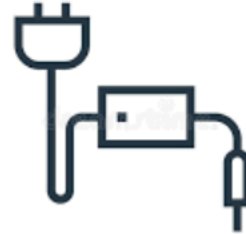
### **Step 3: Mount the iPad**

1. Follow the manufacturer's instructions to attach the iPad to the powered iPad wall mount. This may involve attaching brackets or clips to the back of the iPad and then sliding it onto the wall mount.
2. Make sure the iPad is properly aligned and securely attached to the wall mount. Double-check the level to ensure it is straight.



#### Step 4: Connect Power and Ethernet (if applicable)

1. Connect the power cord of the iPad to a suitable power source, such as an electrical outlet or a Power over Ethernet (PoE) connection using an Ethernet cable if available.
2. If using PoE, connect the Ethernet cable to the PoE switch or injector, and then connect the other end to the iPad.



#### Step 5: Test and Adjust

1. Power on the iPad and ensure it is connected to the internet.
2. Perform a test run of Oloid Verify/Connect to verify the facial recognition performance. Make any necessary adjustments to the iPad placement or angle to optimize the performance.



The iPad is successfully mounted for Oloid Connect installation. The system is now ready to use for facial recognition verification. Refer to the provided resources or contact Oloid Connect support for further assistance or troubleshooting if needed.

Note: It's important to follow the manufacturer's instructions for the specific powered iPad wall mount you have chosen, as installation steps may vary. Always ensure the iPad is securely attached and properly aligned for optimal performance and safety.